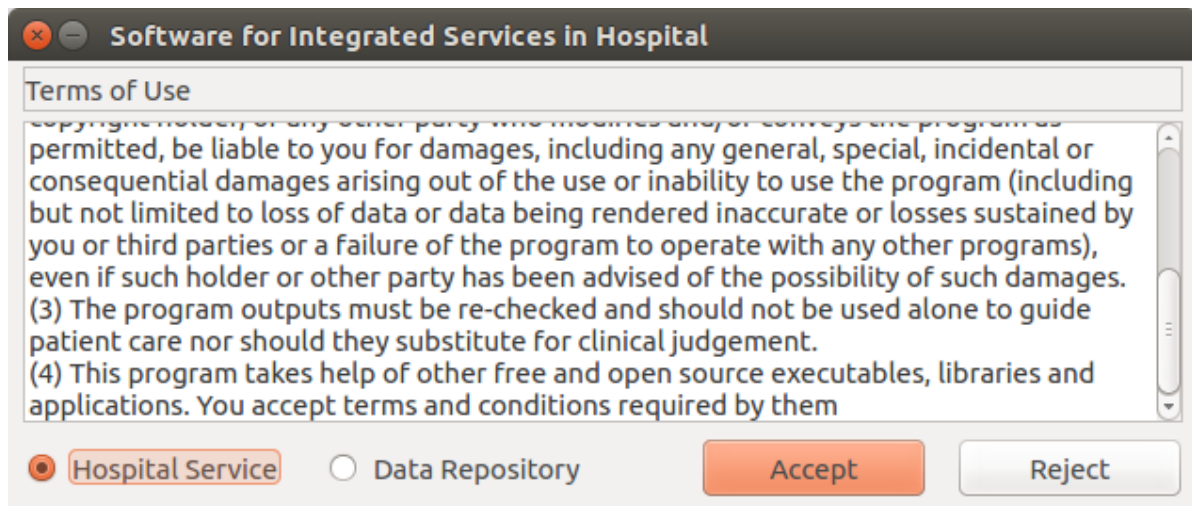
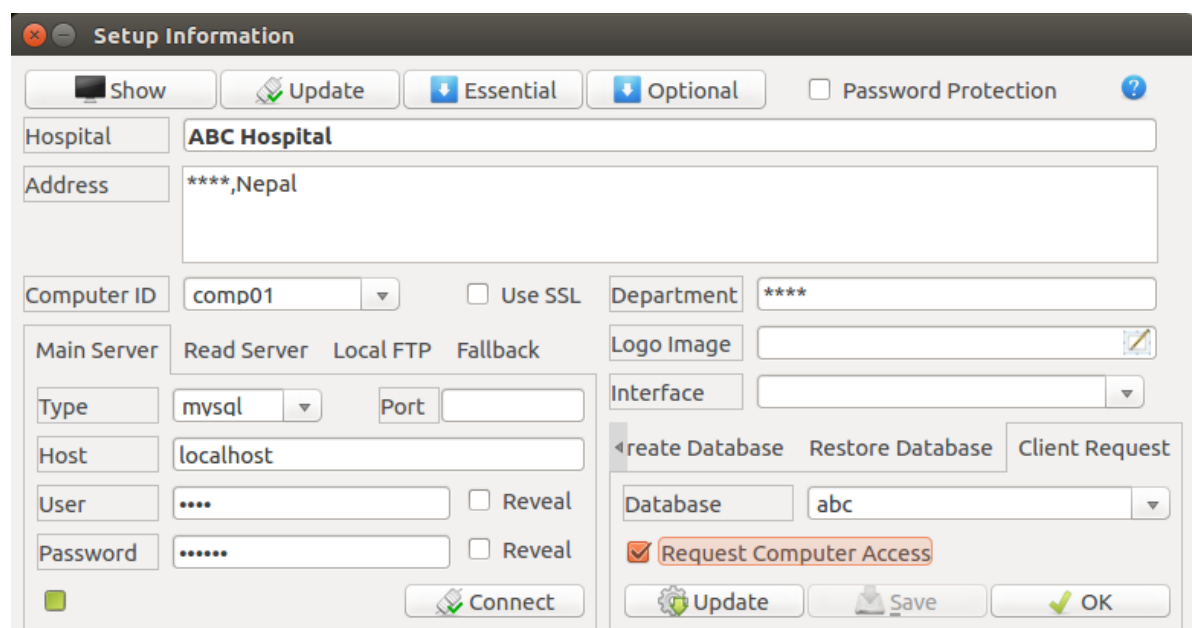


## Installation Client

1. Enable Ubuntu Universe Repository:
  - a. In terminal run following to enable gambas3 repository:  
**sudo add-apt-repository ppa:gambas-team/gambas3**
  - b. In terminal run following to enable PSPP repository (OPTIONAL):  
**sudo add-apt-repository ppa:adamzammit/pspp**
  - c. In terminal run following to enable Ginkgo CADx repository (OPTIONAL):  
For Ubuntu 14.04: **sudo add-apt-repository ppa:gert-die/ginkgocadx-trusty**  
For Ubuntu 16.04: **sudo add-apt-repository ppa:gert-die/xenial-mia**
2. In terminal: **sudo apt-get update**
3. Install graphical software installer (OPTIONAL): **sudo apt-get install gdebi**
4. Download and install zint package for bar code creation (OPTIONAL).  
For Ubuntu 14.04 (i386) download [zint](#) package. For other versions go to zint [Website](#)
5. Install latest wkhtmltopdf package (OPTIONAL) from [Website](#).
6. Install latest qstat statistical package (OPTIONAL) from [Website](#).
7. Download and install SISH Package and Run.
8. Software Setup
  - a. Accept the terms of use(Select the **Hospital Service**)



- b. Then in the setup information form fill the appropriate information



- i. Write the hospital/clinic name.
  - ii. Write the address of Hospital/Clinic.
  - iii. Specify a computer Id .
  - iv. Write the department name(Optional).
  - v. Specify database type(for eg: Mysql, sqlite)
  - vi. Write the host(For eg: localhost, server ip).
  - vii. Write user name of database.
  - viii. Write the database password.
  - ix. Click on connect(If the main server information is correct green indicate else red).
  - x. Click on **Client Request**.
  - xi. Select the database name to be connected.
  - xii. Check the **Request Computer Access**.
  - xiii. Click on Update.
  - xiv. Click on Save.
  - xv. Click on Ok.
  - xvi. Close the form.
- c. Now allow access to this computer from record desk.